

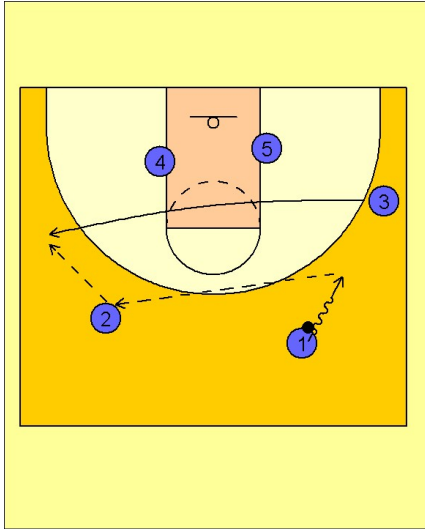
# Illinois

## Set play vs. zone (3)

1

### Illinois Set Play vs. Zone Defense

Similar action to the last set play. #1 reverses the ball to #2 on top while #3 cuts across the top to the opposite wing to receive the next pass from #2.



2

### Illinois Set Play vs. Zone Defense

As #3 receives the ball, #4 screens in and up while #5 ducks in to the low post block looking for the pass from #3. After screening, #4 moves up to the high post to look for the high post pass and then dump into the low post.

