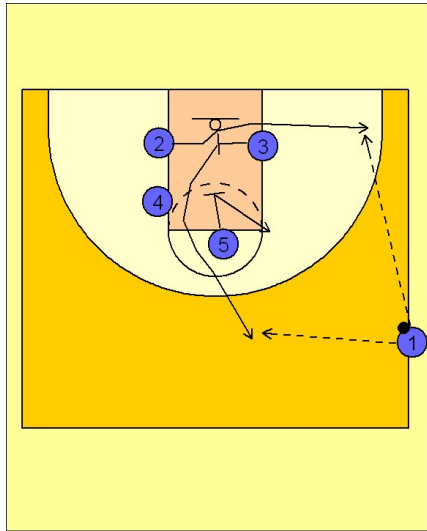


Illinois

Side ob play (1)

1

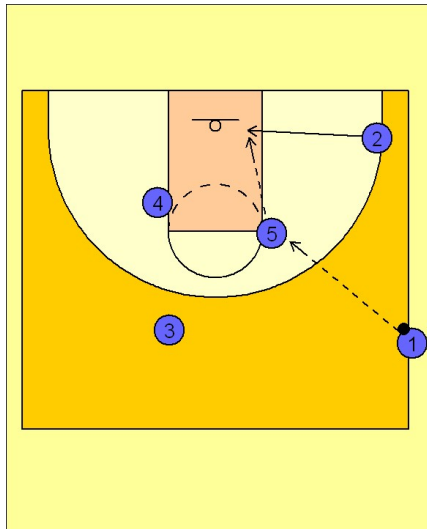


Illinois Side OB vs. Man

#3 screens for #2 who breaks to the ball side corner. #5 down screens for #3 who just finished screening for #2 and breaks to the top of the key area.

#5 flashes back to the ball after screening.

2



Illinois Side OB vs. Man

If #5 receives the ball, #2 will back cut to the basket looking for a quick hitting entry from #5.