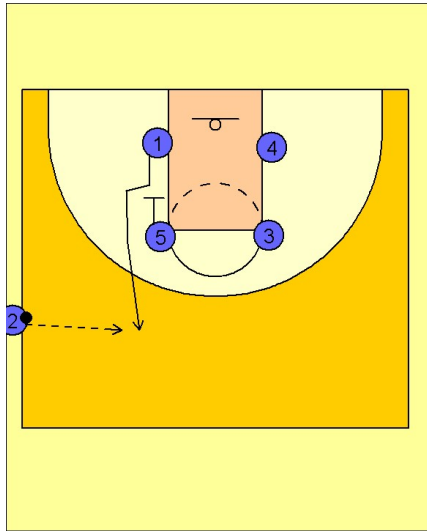


# Illinois

## Side out (2)

1

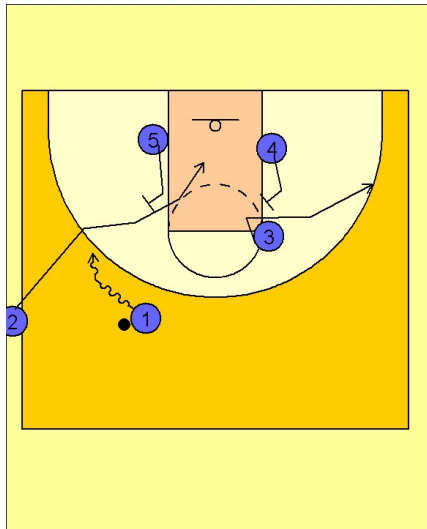


Illinois Side Out vs. Man Defense

Box set to begin.

#5 starts the play by downscreening for #1. #1 pops up to the top and receives the entry pass from #2.

2



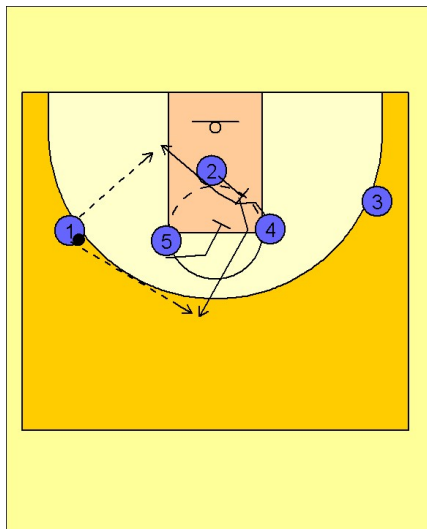
Illinois Side Out vs. Man Defense

Once #1 has the ball, #2 cuts into the lane off of a backscreen from #5.

#4 backscreens for #3 on the right wing area.

#1 takes the ball down to the left wing area.

3



Illinois Side Out vs. Man Defense

Once #1 gets to the wing area #2 is in the position to set a diagonal backscreen for #4.

#4 cuts to the ballside low block looking for the post entry pass from #1.

If #4 is not open, #2 will break up to the top of the key area off of a downscreen from #5.