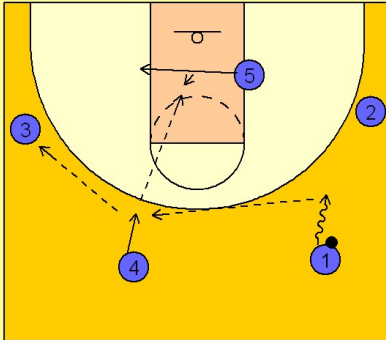


Kansas

Early offense (1)

1

Kansas Early Offense

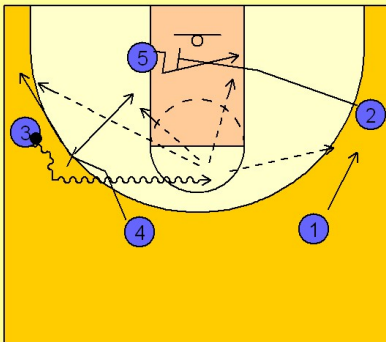


(#1) brings the ball up the sideline. (#1) reverses the ball to the trailing (#4) man who passes to (#3) on the wing.

(#5) slides across the lane following the basketball. (#4) looks inside for a post pass opportunity for (#5). If it isn't there, he reverses the ball to (#3).

2

Kansas Early Offense



Normally, Kansas likes to back screen for the (#4) man on the perimeter. Since so many teams are looking for this they tend to back of the (#4) man after he releases the ball. This makes a great ball screening situation for (#4) because his defender is sinking back in the lane and cannot help as quickly on the pick and roll with (#4) and (#3) which you are about to see.

Once (#3) has the ball, (#4) comes over and sets a ball screen for a pick and roll with (#3).

At the same time, (#2) is coming across the lane to set a back pick for (#5).

(#3) comes off the screen hard looking for penetration and a shot or lay-up, while (#5) is also coming across the lane looking for a pass from (#3).

(#4), after screening, can roll to the basket for a shot or pop out to the 3-point line if he has the range. (#1) slides down a bit for the drive and kick pass from (#3).

Kansas

Early offense (1)

3

Kansas Early Offense

(#4) rolls down in the lane after ball screening for (#3) and sets a screen for (#2) who has just set a screen for (#5). (#2) comes off the screen looking for a jump shot on the wing.

