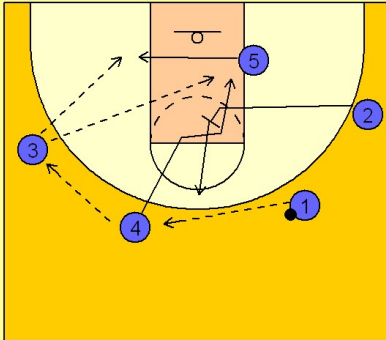


# Kansas

## Early offense (2)

1

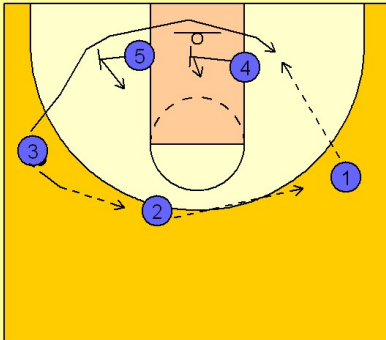
### Kansas Early Offense



(#1) reverses the ball to (#4) who reverses to (#3). (#5) slides across the lane following the basketball. (#2) slides in the lane and sets a back screen for (#4). (#3) can look for the post up with (#5) or throw the lob to (#4) going to the basket.

2

### Kansas Early Offense



Assuming the post up and the lob are not there, (#3) reverses the ball to (#2) who reverses to (#1). (#5) and (#4) set screens for (#3) along the baseline trying to free him for a shot on the block or out to the corner. They will run motion offense from here.