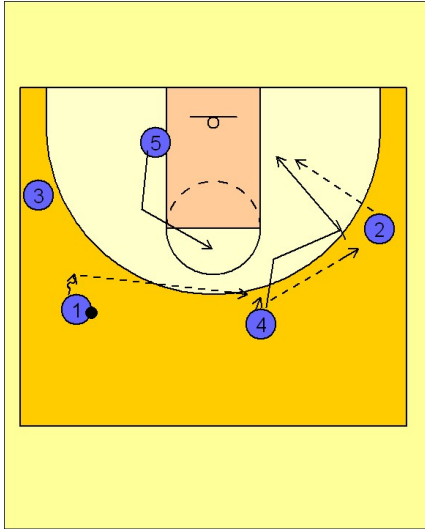


# Kansas

## Early offense (3)

1

### Kansas Early Offense



(#1) reverses the ball to (#4) who reverses the ball to (#2). (#4) goes over to set a ball screen while (#5) clears out the low post area by flashing into the free throw area. (#4) moves over to set the ball screen and then "slips" the screen by breaking straight to the basket looking for a direct pass from (#2). This is a great option because of all the ball screens Kansas sets, they will be looking for (#2) to dribble over the top. Faking the screen while clearing out the post area is a great diversion from their normal pick and roll early offense.