

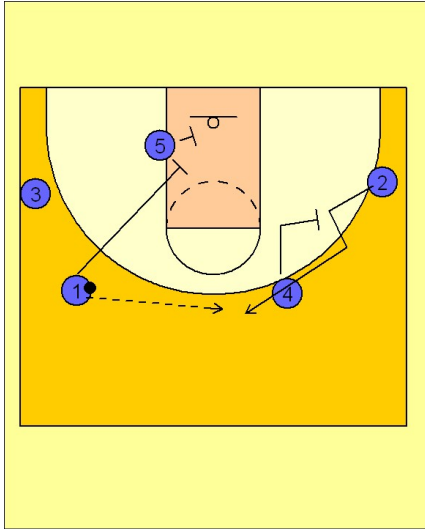
# Kansas

## Early offense (4)

1

### Kansas Early Offense

(#4) screens away on the perimeter for (#2), bringing him to the top of the key for ball reversal. (#1) passes to (#2) and slides down in the lane to set a double screen with (#5).



2

### Kansas Early Offense

(#2) looks for (#3) who has broken down into the lane and comes back off the double screen from (#5 and #1) for a shot on the same side of the floor. (#3) can read the defense and break back to the middle, underneath the basket for a lay-up as well.

