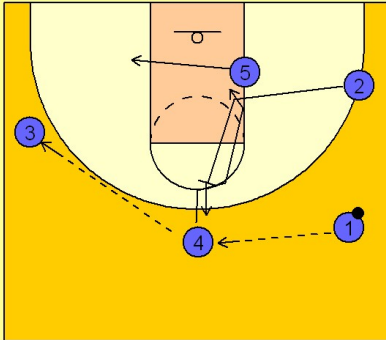


Kansas

Early offense (5)

1

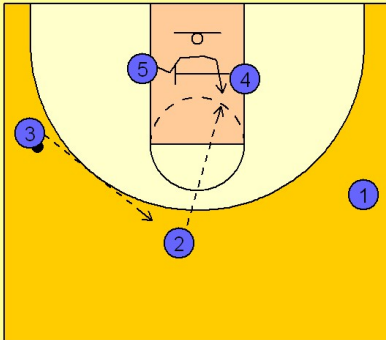
Kansas Early Offense



- (#1) reverses the ball to (#4) who passes to (#3).
- (#5) follow the ball across to the block.
- (#2) moves in the lane and sets a back pick for (#4). If the lob is there (#3) will make the pass.

2

Kansas Early Offense



- (#3) then passes back to (#2) who has stepped out after the back screen for (#4).
- (#4) screens across for (#5).
- (#2) looks to feed the post man (#5) from the top.