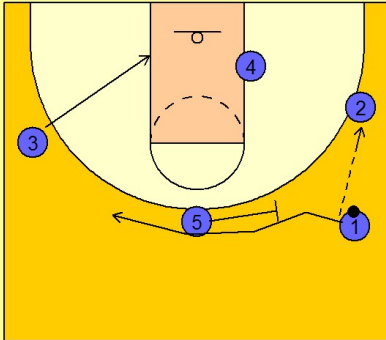


Kansas

Early offense (9)

1

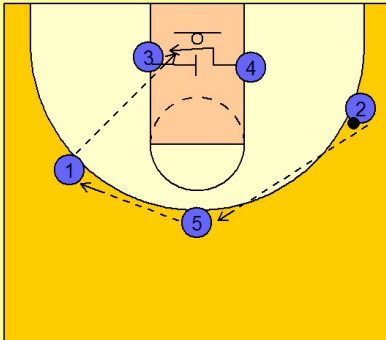
Kansas Early Offense



#1 enters the ball to #2 on the right wing. #5 back screens for #1 who cuts over the top to the oppsite wing area. #3 cuts down to the low block opposite the ball.

2

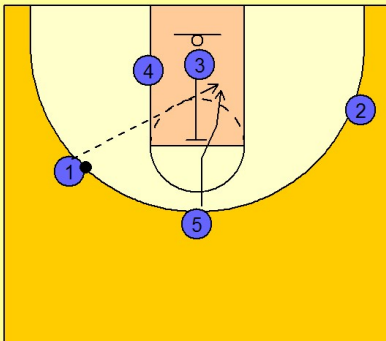
Kansas Early Offense



#2 then quickly reverses the ball to #5 on top who passes over to #1 on the left wing. #3 is timing his screen across so that #4 will be open coming to the block as the ball is arriving in #1's hand.

3

Kansas Early Offense



After screening for #4, #3 will then back screen for #5 who cuts to the basket looking for the lob pass from #1.

Kansas

Early offense (9)

4

Kansas Early Offense

#3 then pops out to the top of the key after back screening for #5 and receives the pass from #1. #5 then screens across for #4. #3 looks to make the post entry pass to #4 under the basket.

