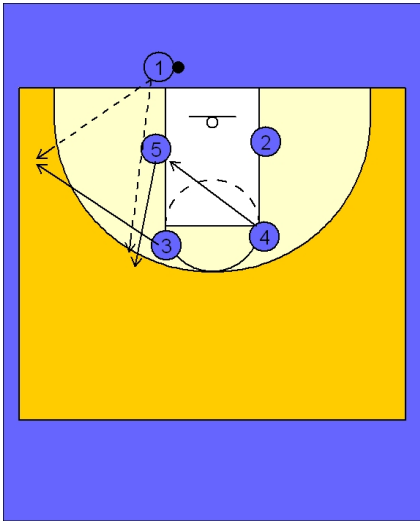




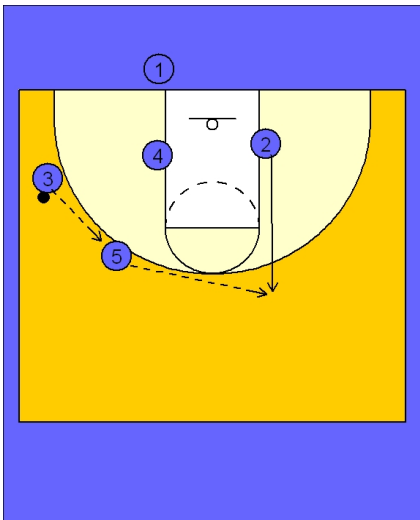
Ob under vs. man (9)



Kansas OB Under vs. Man Defense

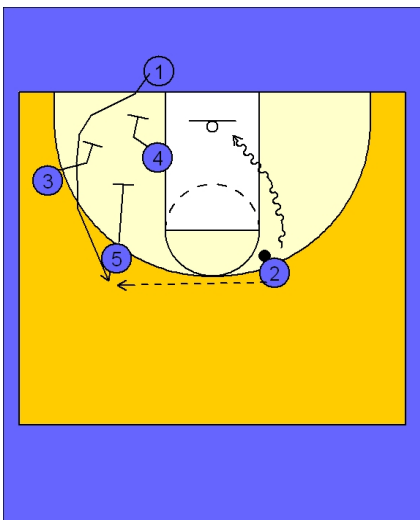
Box set to begin.

Play starts with #5, #3 and #4 moving together. #1 looks to enter the ball either to #3 on the left wing or straight out to #5.



Kansas OB Under vs. Man Defense

If #3 receives the inbounds pass he will quickly pass the ball to #5 who will then hit #2 breaking straight out on top.



Kansas OB Under vs. Man Defense

Once #2 has the ball he has the option of looking for #1 coming out of bounds off a triple staggered screen or he can look to penetrate to the basket since all of the defenders are occupied with the triple screen action.