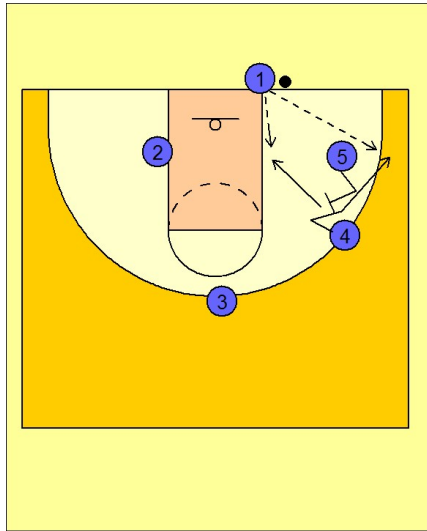


# Kansas

## Ob under vs. man (4)

1

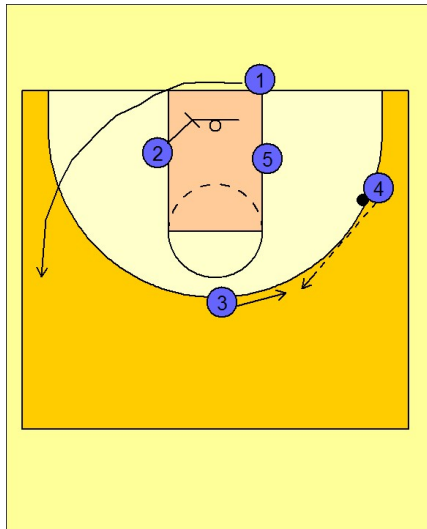


Kansas OB Under vs. Man Defense

#5 screens for #4 on the right wing. This is usually an easier entry as they are rarely denying your post players the ball 20' from the basket.

After screening, #5 rolls to the basket looking for the pass from #1 if the defenders cheat on the screen.

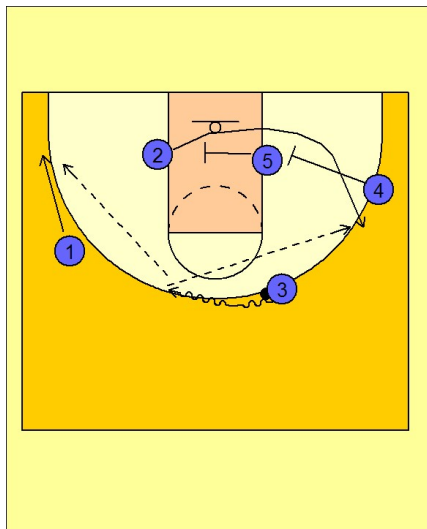
2



Kansas OB Under vs. Man Defense

#4 passes the ball on top to #3. #1 cuts inbounds out to the opposite wing area off of a screen from #2.

3



Kansas OB Under vs. Man Defense

#3 takes the ball on the dribble towards the middle while #5 and #4 sets screens for #2 breaking out to the right wing area for the jumper.

#3 could also drive the gap looking to kick out to #1.