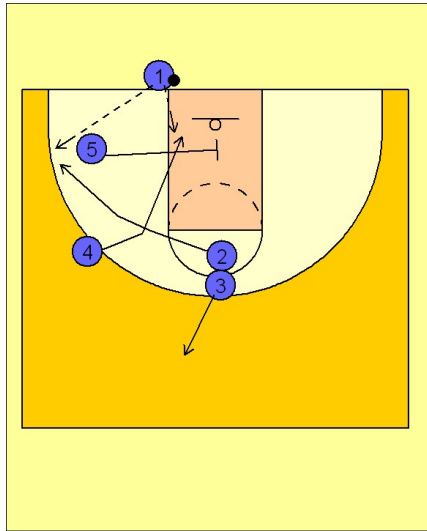


Kansas

Ob under vs. zone (2)

1

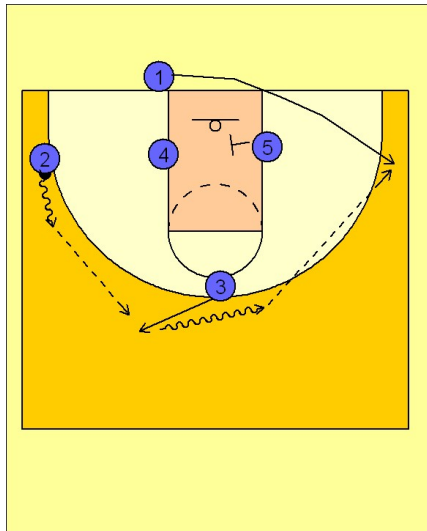


Kansas OB Under vs. Zone Defense

#5 starts the play by cutting into the middle of the lane and screening the nearest defender. #4 cuts next with #2 right behind him. #4 looks to step into the hole #5 created while #2 breaks to the corner for the next entry pass option.

#3 breaks straight out for a safety entry pass.

2



Kansas OB Under vs. Zone Defense

If #4 does not receive the pass, #2 will then take the entry pass and drive the ball up the sideline to #3 on top who will look to drive it over and pass to #1 stepping inbounds to the corner off of a screen from #5.