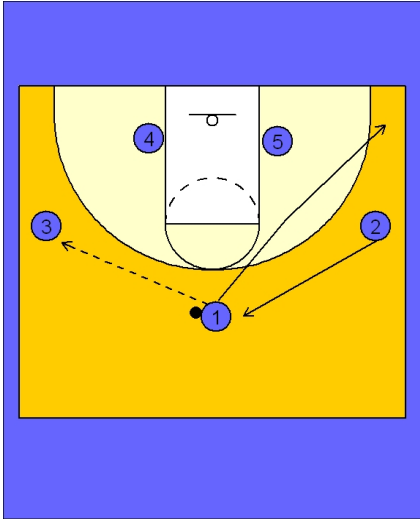




Quick hitter (8)

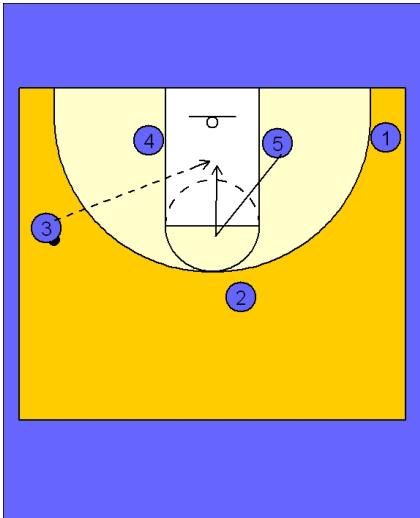


Kansas Quick Hitter vs. Man Defense

3 out 2 in alignment.

#1 enters to either wing and cuts to the opposite corner area.

Here we see #2 slide up as #1 leaves the top of the key area.



Kansas Quick Hitter vs. Man Defense

Once #3 has the ball, #5 flashes to the high post to receive the ball. He will show his hands and call for the ball and then make a sharp back door cut looking for the pass from #3.

This play is certainly more effective if #5 has flashed and caught the ball a few times in the high post and made the high / low pass to #4. Teams will then try and take away this flash cut and pass and open up the opportunity for the back door cut.