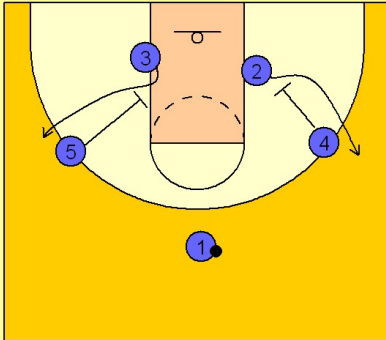


# Kansas

## Quick hitter (6)

1

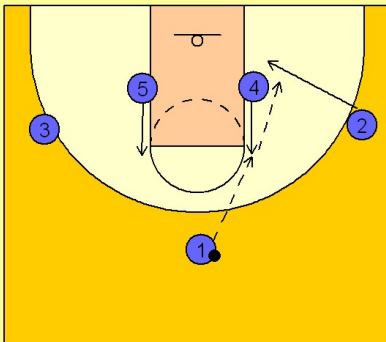
Kansas Quick Hitter vs. Man Defense



#4 and #5 down screen for #2 and #3. Both players pop out to their respective wing areas to receive a potential entry pass from #1.

2

Kansas Quick Hitter vs. Man Defense



After #4 and #5 down screen they immediately flash to the high post elbows to receive the entry pass from #1. Whomever #1 hits, the wing player will cut to the basket for a quick back door pass and layup.