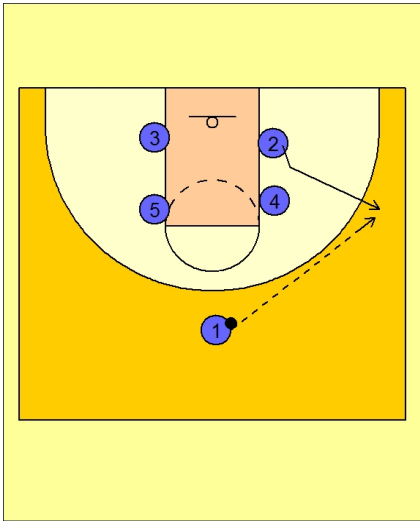




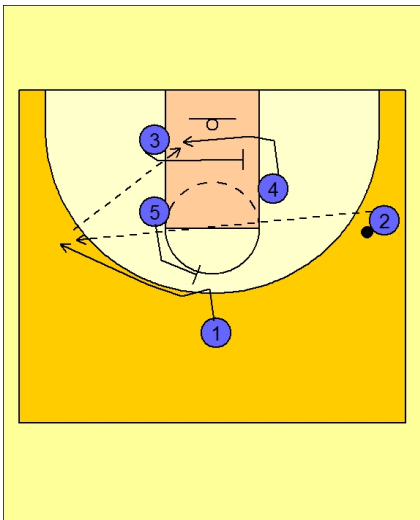
Set play (17)



Kansas Set Play vs. Man Defense

Box set to begin.

#2 pops out to the right wing to receive entry pass.

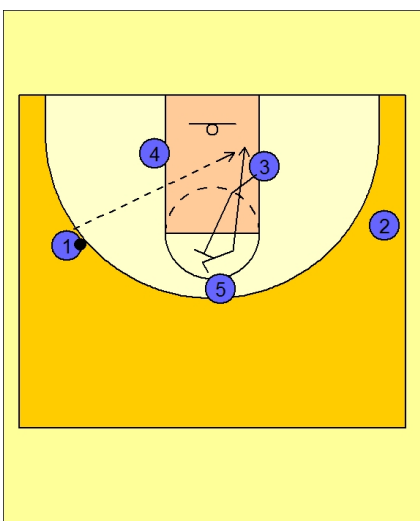


Kansas Set Play vs. Man Defense

#1 uses a back screen from #5 to flare to the back side wing.

At the same time, #3 is screening across for #4.

#2 skips the ball across to the opposite wing. #1 can look to score on the catch or pass the ball inside to #4.



Kansas Set Play vs. Man Defense

#3 now back screens for #5 on top looking for the lob pass to the rim.



Kansas Set Play vs. Man Defense

If that is not there they are in a 3 out 2 in alignment to run another set play or look to create off the dribble.

