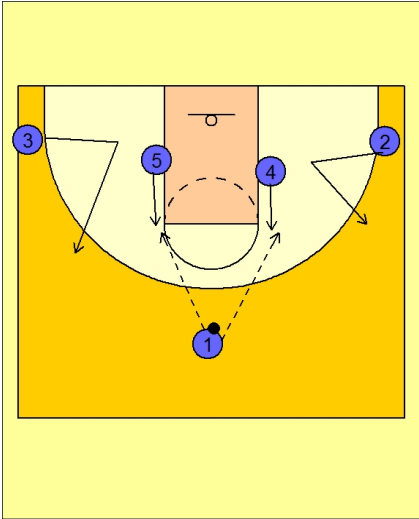




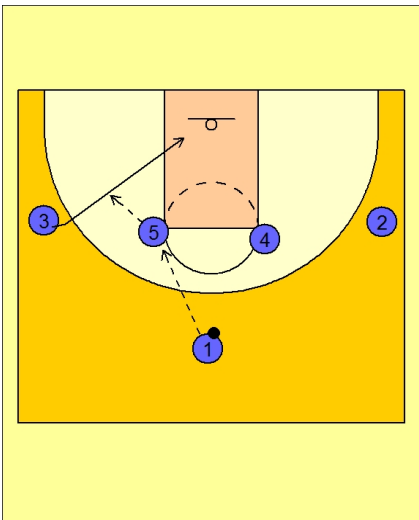
## Set play (21)



### Kansas Set Play vs. Man Defense

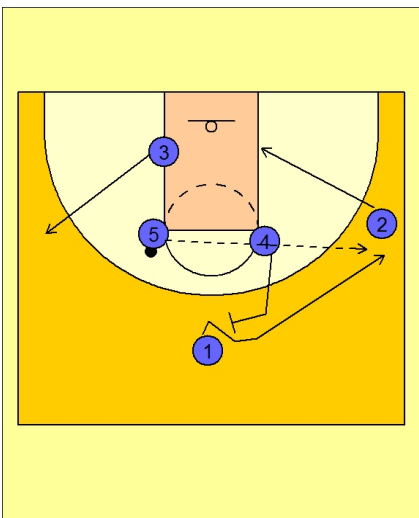
#4 and #5 flash to the elbows while the wing players #2 and #3 set up their man for a wing entry pass.

#1 has four options on this play, hitting either of the 4 across players. At this point in the game (first half) we see Kansas using the post entry.



### Kansas Set Play vs. Man Defense

#1 hits #5 and #3 immediately makes a back door cut. First option is #5 dumping the ball off to #3, below the defenders arms.



### Kansas Set Play vs. Man Defense

If that back door cut is not available, #2 cuts to the right low block while #1 uses a flare screen from #4 to cut to the back side wing area.

#5 passes the ball over the top to the right wing for a potential jump shot from #1.

#3 cuts up to the left wing.

If #1 does not have a shot he tries to feed the ball inside to #2 posting.



### **Kansas Set Play vs. Man Defense**

While #2 is posting up, #4 and #5 set a double staggered screen away for #3, occupying the weakside defenders. This action allows for #2 to be isolated in the low post.

