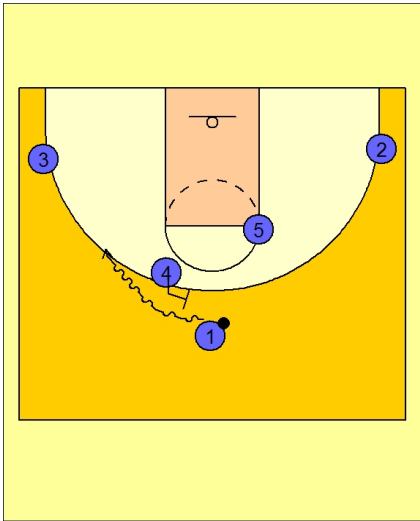


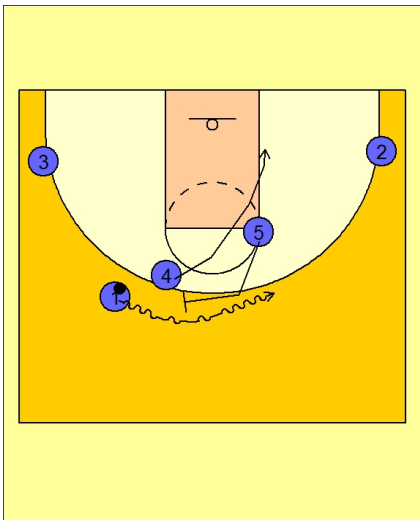


Set play (22)



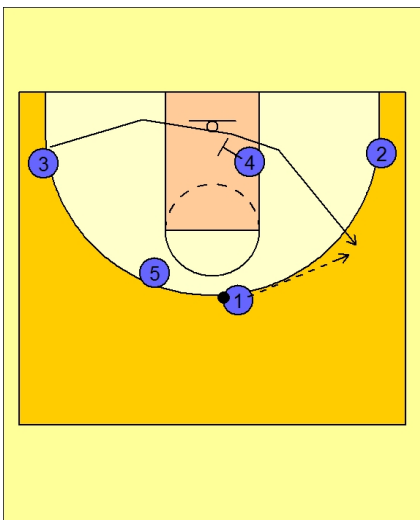
Kansas Set Play vs. Man Defense

#1 uses a ball screen from #4 going to the left side of the floor.



Kansas Set Play vs. Man Defense

#4 rolls to the right low block while #5 moves up to give #1 another ball screen in the opposite direction.



Kansas Set Play vs. Man Defense

As #1 is coming off the ball screen, #3 is cutting under the rim and out to the right wing area off a down screen from #4.



Kansas Set Play vs. Man Defense

If #3 does not have a shot, they will isolate #4 in the lane.

