

Kansas

Set play (5)

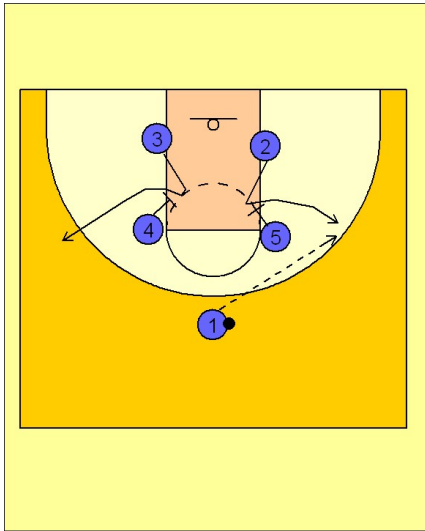
1

Kansas Set Play vs. Man Defense

Box set to begin.

#5 and #4 set down screens for #2 and #3, but stay higher up in the lane and let #2 and #3 use the screen at the elbows to break free to the wing area.

#1 will enter to either open wing.

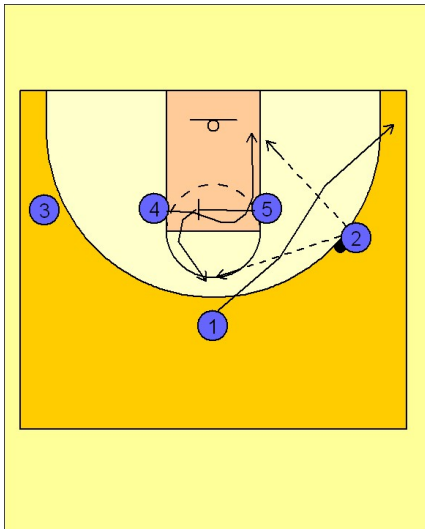


2

Kansas Set Play vs. Man Defense

After entering to #2, #1 breaks to the ball side corner. #5 screens across for #4 who curls down the lane looking for a post entry pass from #2.

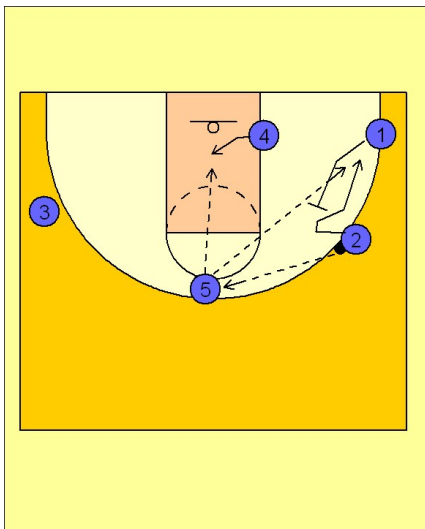
After screening, #5 breaks up to the top of the key area looking for a pass from #2.



3

Kansas Set Play vs. Man Defense

Once #5 receives the pass from #2, #4 ducks in the lane looking for the entry pass from #5. On the wing, one option is for #1 to set a back screen or flare screen so #2 can break to the corner area for a pass from #5 and shot.

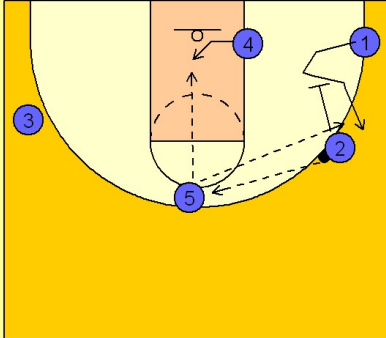


Kansas Set play (5)

4

Kansas Set Play vs. Man Defense

Another option on the wing is for #2 to set a down screen for #1 freeing him for a jumper on the wing.



5

Kansas Set Play vs. Man Defense

If #5 passes over to #3, both #5 and #2 will set a double or staggered screen for #1, freeing him for a shot on top. #4 follows the ball across looking for a post entry pass from #3.

