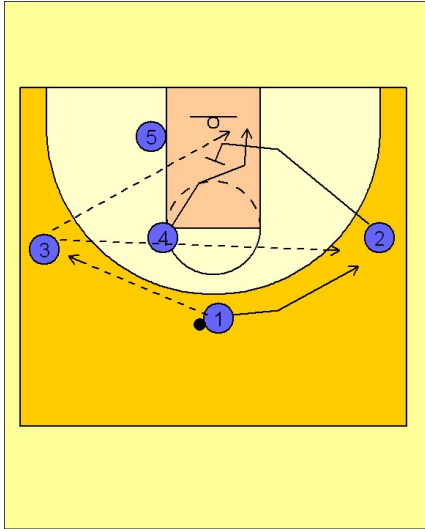


# Kansas

## Set play vs. zone (2)

1

### Kansas Set Play vs. Zone



(#1) enters the ball to (#3). The opposite wing player (#2) slides into the lane and back screens the low weakside defender. (#4) rolls to the basket looking for the lob or post up opportunity from (#3). (#1) slides over to the wing for a skip pass as this action will occupy the back side zone defenders.