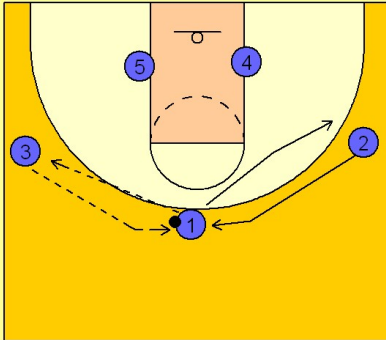


Kansas

Set play vs. zone (3)

1

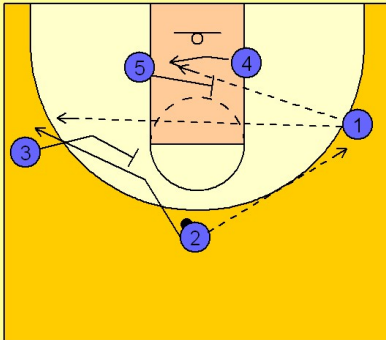
Kansas Set Play vs. Zone



(#1) passes to (#3) and cuts to the opposite wing while (#2) replaces him at the top. (#3) returns the pass to (#2) at the top of the key.

2

Kansas Set Play vs. Zone



(#2) passes to the wing player (#1). After the pass, (#3) sets a back screen on the top of the zone while (#5) steps in and screens the low post defender while (#4) slides in behind (#5) looking for a lob or post pass to the rim.