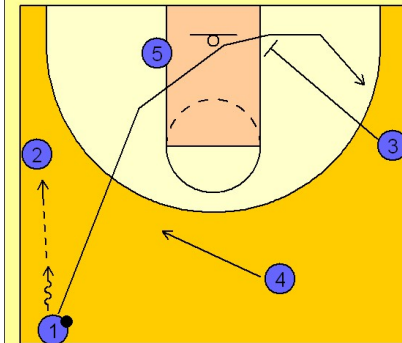


Kentucky

Early offense (1)

1

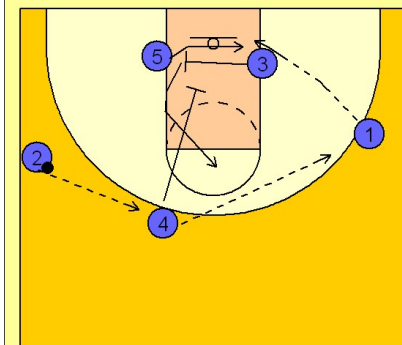
Kentucky Early Offense



(#1) pushes the ball up either side of the floor. He enters the ball to (#2) and cuts through the lane looking for a down screen from (#3) and pops out the other side. (#4) slides over for floor balance and spacing.

2

Kentucky Early Offense



(#2) reverses the ball to (#4) who quickly looks for (#1) who just came off the down screen from (#3). If he doesn't have a shot, he looks inside for the (#5) man who is getting a cross screen from (#3).

(#4) will down screen for (#3) after reversing the ball to (#1).