

Kentucky

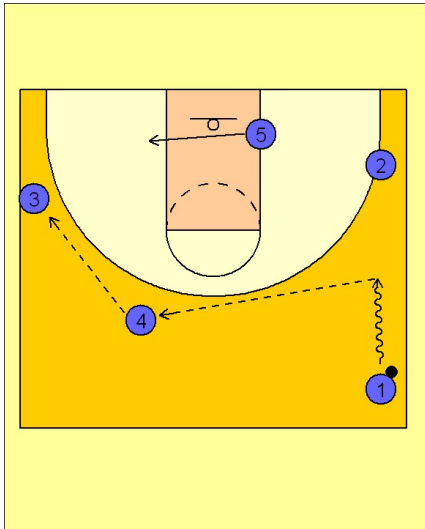
Early offense (5)

1

Kentucky Early Offense

Like Kansas and North Carolina, Kentucky will back screen for the trailing perimeter player on ball reversal out of their transition.

(#1) pushes the ball up and then reverses the ball to the trailing (#4) man, who passes to the (#3) wing man. (#5) follows the basketball across the lane to the ball side block.

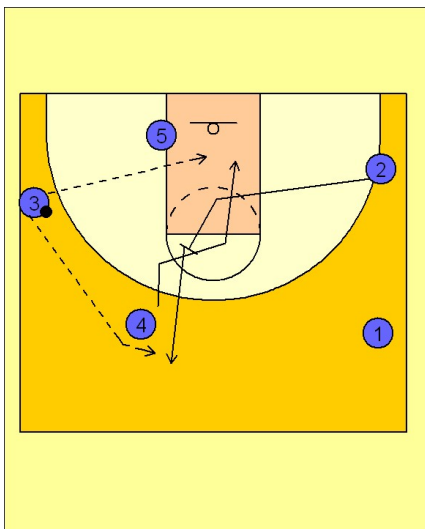


2

Kentucky Early Offense

(#2) slides into the lane and sets a back screen for (#4). (#3) will look for the lob pass to (#4). If it is not there, he will center the ball to the (#3) man who has popped out for floor spacing and balance.

You are now in your 3 out 2 in alignment ready to run a set play or motion offense.



3

Kentucky Early Offense

On the pass to the top of the key (#2), they will look to duck the post player (#4) in the paint looking for a pin and seal and pass directly down in the post from (#2).

This is usually a good option if the post player (#4) goes hard to the basket looking for a lob pass, taking the defender in with him near the basket to stop the lob. (#4) can then spin, pin and seal for good inside post position.

