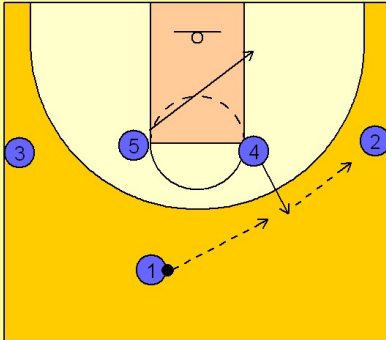


Kentucky Quick Hitter (1)

1

Kentucky Quick Hitter

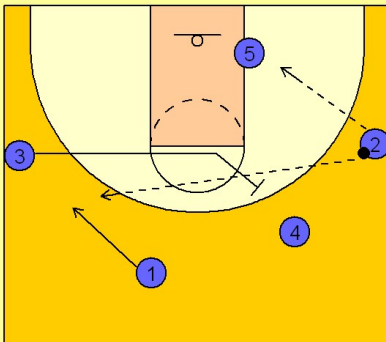


1 - 4 high alignment. (#4) pops out opposite the ball, looking to receive the entry pass from (#1).

(#4) then passes to (#2) on the wing. (#4 or #2) quickly look inside to the cutting (#5) man for a possible isolation in the post.

2

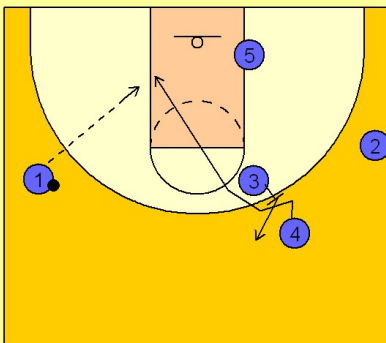
Kentucky Quick Hitter



If (#5) is available, he loads him up in the post. If not, he skip passes to the (#1) man who is fading to the opposite side of the floor. (#3) slides into position to set a diagonal screen for the (#4) man.

3

Kentucky Quick Hitter



(#4) sets up his man for a hard diagonal cut to the low block looking for a pass from (#1). After screening, (#3) pops out to the top of the key area for spacing and floor balance.