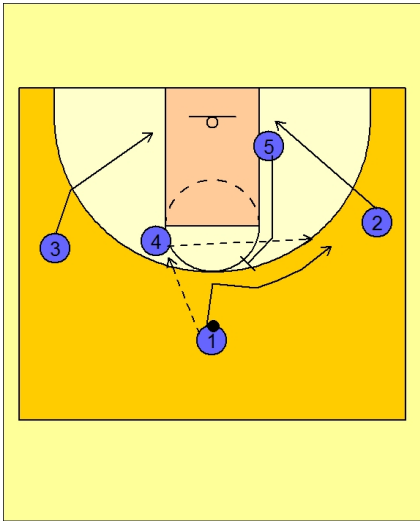




Set play (12)



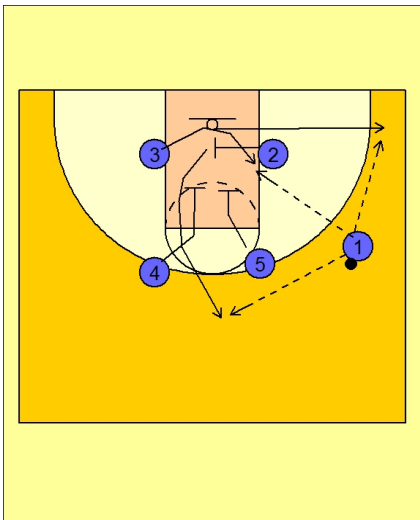
Kentucky Set Play vs. Man

#1 enters the ball to #4.

#2 and #3 cut to their respective low block areas.

#5 sets a back screen or flare screen for #1.

#4 makes the pass over the top to #1 on the right top area.



Kentucky Set Play vs. Man

As soon as #1 catches the ball, #2 screens across for #3.

#3 may cut across and post up or cut to the corner looking for the open shot.

#4 and #5 set a double screen down for #2.