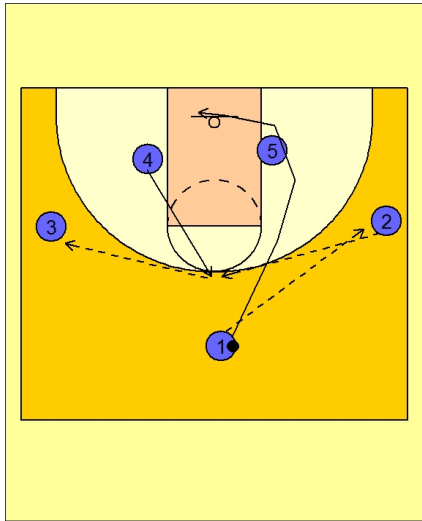




Set play (13)

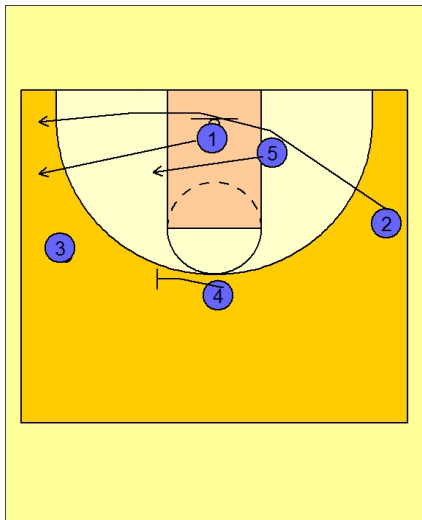


Kentucky Set Play vs. Man

#1 passes to #2 on the right wing.

#1 cuts down and around the low post player #5.

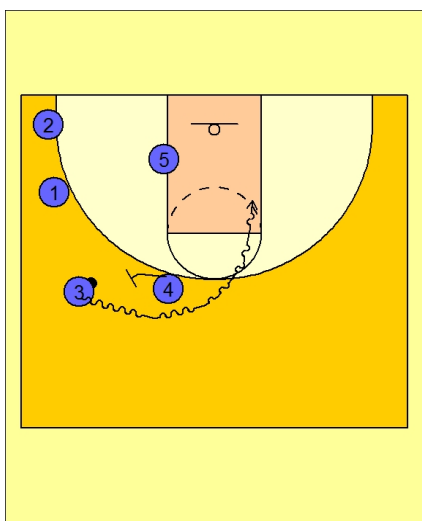
#4 flashes to the high post and receives the pass from #2. #4 catches and throws the ball to #3 on the left wing.



Kentucky Set Play vs. Man

#2 cuts across the lane to the left corner area effectively making it an all out clear-out.

#4 then moves toward #3 to set the ball screen.



Kentucky Set Play vs. Man

#3 drives the ball hard off the ball screen from #4 and tries to get in the lane and score.