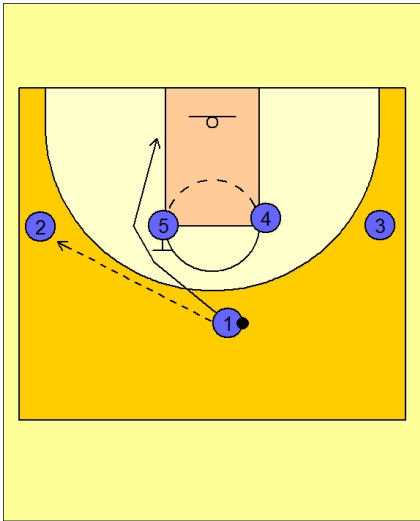




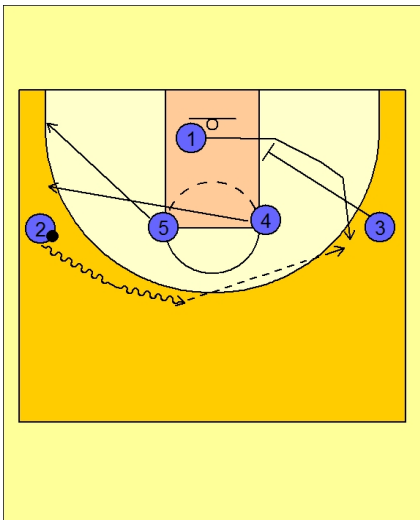
Set play (17)



Kentucky Set Play vs. Man

1 - 4 high to begin.

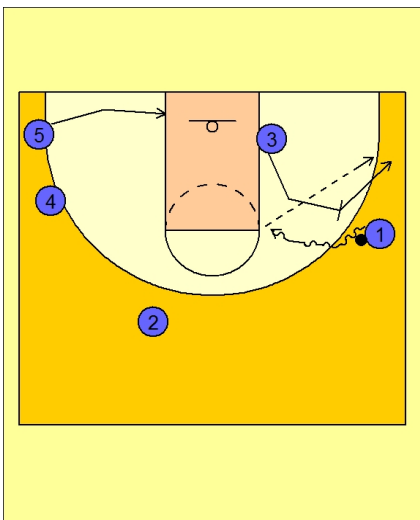
#1 passes to #2 on the left wing. #1 then makes UCLA cut off the back screen from #5.



Kentucky Set Play vs. Man

Once #2 has the ball, #5 and #4 clear out to the ball side corner and wing.

#2 centers the ball on the dribble while #3 down screens for #1. #1 can shoot the open jumper here.



Kentucky Set Play vs. Man

If #1 does not take a shot, #3 moves up for the pick and pop with #1 on the right wing.

#5 runs to the rim for the offensive rebound or dump off pass if #1 gets in the paint.