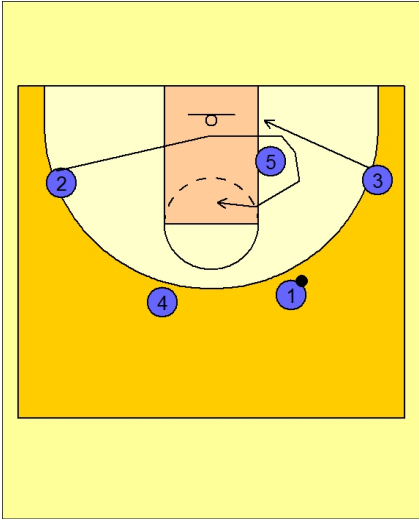




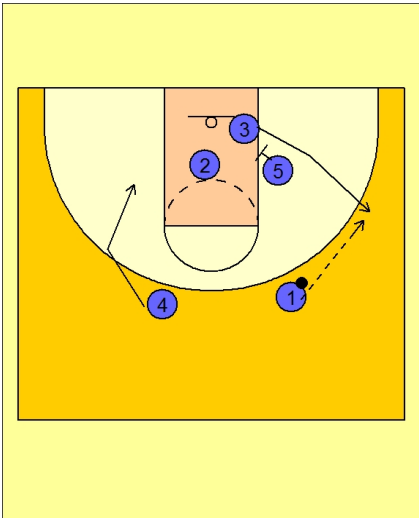
Set play (20)



Kentucky Set Play vs. Man

Play starts with #3 cutting down in the right low block area while #2 curls around #5 on the block.

#2 should get the ball if he is open.

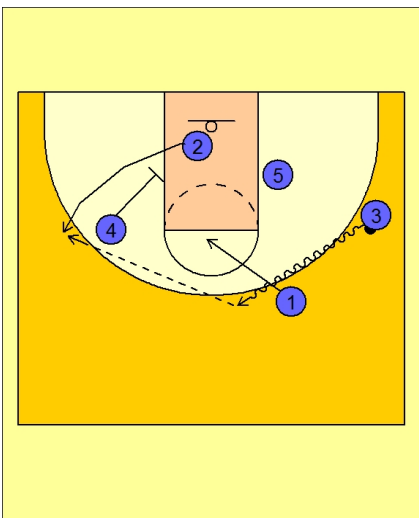


Kentucky Set Play vs. Man

As soon as #2 curls off of #5, #3 cuts out to the ball side wing off a screen from #5.

As this is happening, #4 is getting setup on the backside for a downscreen for #2.

#1 passes to #3 on the right wing.



Kentucky Set Play vs. Man

#1 cuts to the high post.

#3 drives the ball to the top of the floor.

#2 comes off the downscreen from #4.

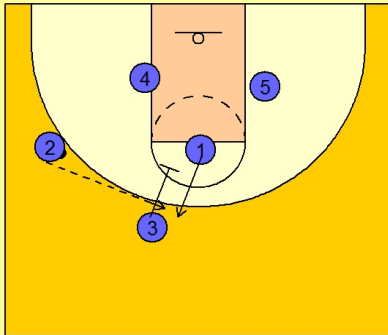
#3 passes to #2 on the left wing for the open jump shot.



Kentucky Set Play vs. Man

#3 screens down for #1.

#2 passes to #1 on top.



Kentucky Set Play vs. Man

#2 now uses staggered screens along the baseline from #4 and #5.

#1 makes the pass to #2 if he is open for the shot.

