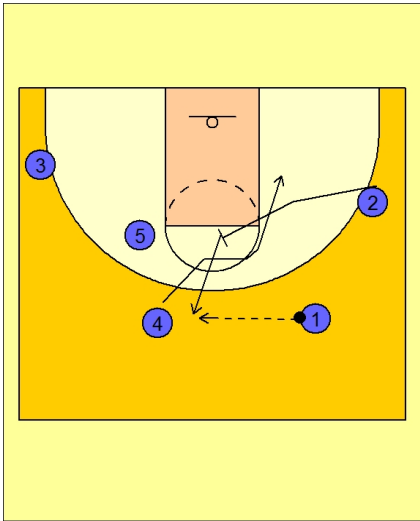




Set play (22)

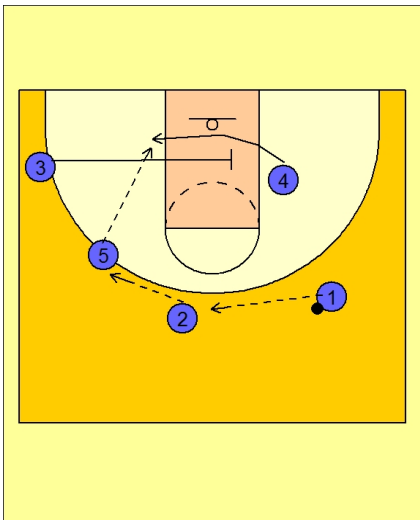


Kentucky Set Play vs. Man

#2 sets a back screen for #4.

#4 cuts down the right lane line.

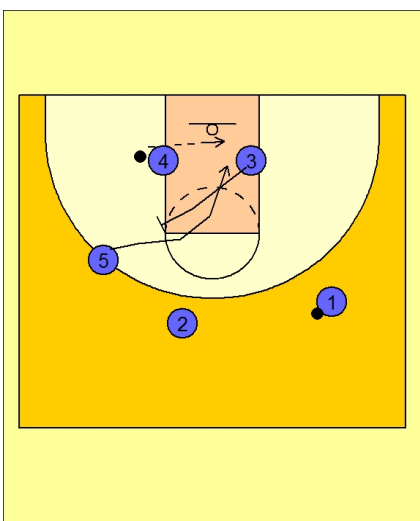
#1 passes to #2 popping out after screening.



Kentucky Set Play vs. Man

#2 reverses the ball to #5 while #3 cuts in the lane and screens for #4.

#5 loads up the post #4.



Kentucky Set Play vs. Man

On #4's catch, Kentucky can do one of two things here.

1) They set a back screen with the screener, #3. #3 back screens for #5. #4 looks to hit #5 cutting to the rim.



Kentucky Set Play vs. Man

Or 2) They can reverse the action and #5 will screen down for #3 popping out to the ball side wing area, looking for the pass back out from #4.

#5 can also cut to the rim after screening looking for the pass from #4.

