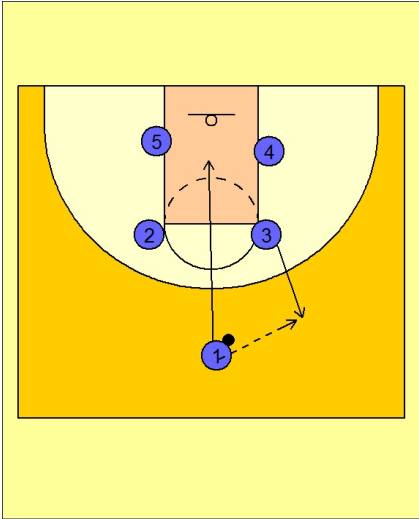




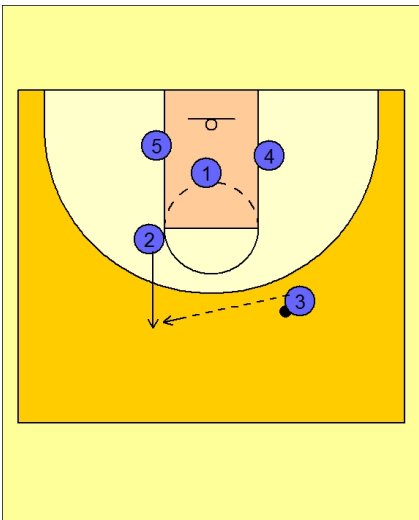
Set play (23)



Kentucky Set Play vs. Man

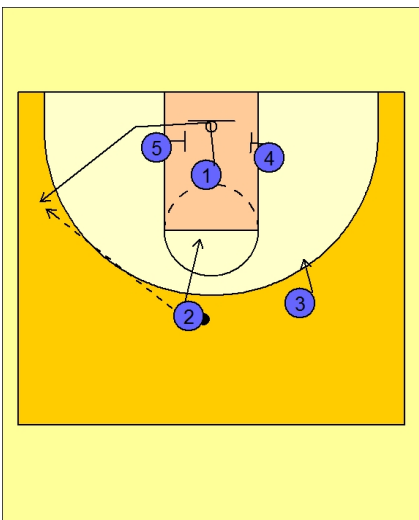
Box set to begin.

#3 breaks out to receive the entry pass. #1 passes to #3 and cuts under the rim.



Kentucky Set Play vs. Man

#2 now steps out to receive the next pass from #3.



Kentucky Set Play vs. Man

#1 now has the option to cut off the screen from either #4 or #5.

In the championship game, #1 chose the left side of the floor.

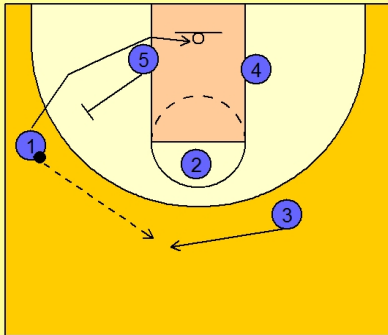
#2 passes to #1 on the left wing for the open jump shot. #2 then cuts into the high post area.



Kentucky Set Play vs. Man

If no shot, #1 passes to #3 on top of the floor.

#1 uses a back screen from #5 and cuts under the rim.



Kentucky Set Play vs. Man

They are now back in their original alignment with #1 having the option to cut out to the wing off of either screen from #4 or #5.

