

Kentucky Set play (1)

1

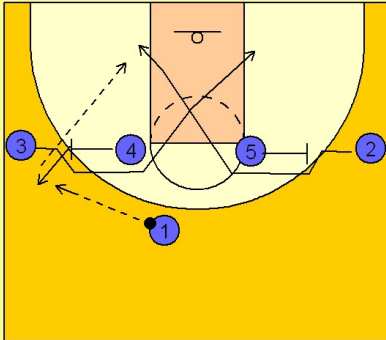
Kentucky Set Play

(#4 and #5) step out and screen perimeter players (#2 and #3).

Whatever side the point guard (#1) takes, they will be looking for the cutting (#2 or #3) man off of the "X" cut action.

In this diagram, they enter to (#4) who has stepped out after the screen.

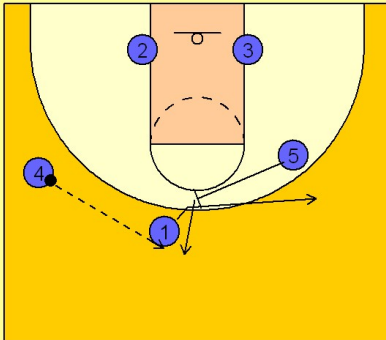
He will look for (#2) coming off of the "X" cut.



2

Kentucky Set Play

The opposite post that did not get the ball will set a back screen for (#1) who flares to the weakside of the floor for a potential skip pass from (#4) and shot from (#1). If the skip pass is not there, they will reverse the ball to (#5) who steps out after the back screening (#1).



3

Kentucky Set Play

(#1 and #4) can set down screens and you are into your motion offense.

