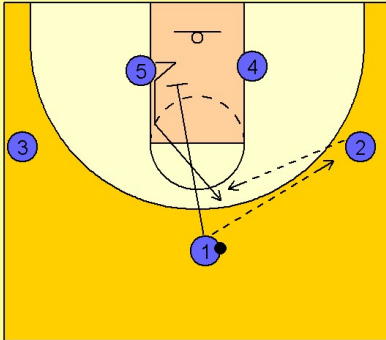


# Kentucky Set play (10)

1

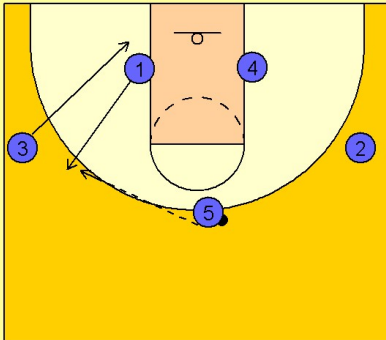
Kentucky Set Play vs. Man



#1 passes to #2 on the right wing and cuts down the lane and screens for #5. #5 breaks up to the top of the key to receive the pass from #2.

2

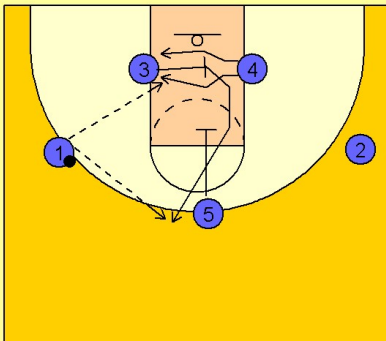
Kentucky Set Play vs. Man



As soon as #5 comes up off of #1's down screen, #1 breaks out to the left wing and #3 cuts down to the ball side block. #5 reverses the ball to #1 on the left wing.

3

Kentucky Set Play vs. Man



Once #1 has the ball, #3 screens across for #4 while #5 screens down for the screener, #3. #1 looks to hit #4 inside or #3 on top.