

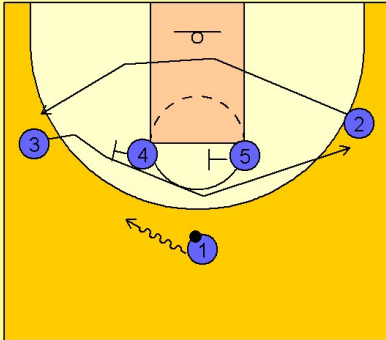
Kentucky Set play (11)

1

Kentucky Set Play vs. Man

1 - 4 high to begin.

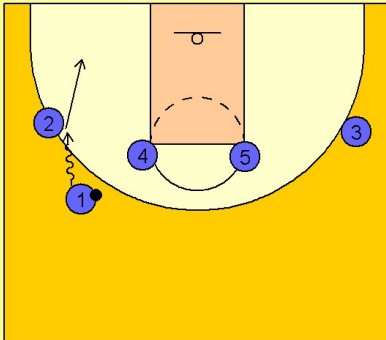
#1 starts to dribble towards the left wing area. #4 and #5 set a double staggered screen across the top for #3 while #2 cuts underneath and out to the left wing.



2

Kentucky Set Play vs. Man

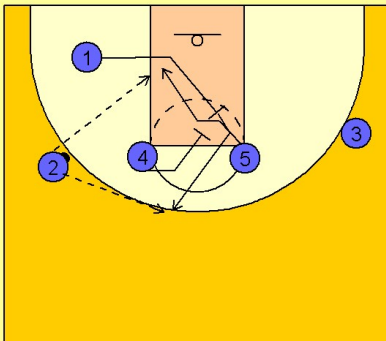
#1 continues his dribble and hands the ball off to #2 on the left wing. #1 then cuts down to the left low corner area.



3

Kentucky Set Play vs. Man

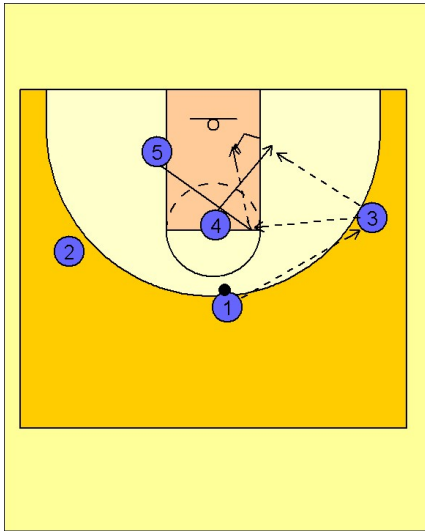
Once #2 has the ball, #1 moves into the lane and sets a diagonal back screen for #5. #2 looks to feed #5 cutting to the left low block area. As soon as #5 comes off #1's back screen, #4 sets a "pick the picker" screen for #1, trying to free him for an open jumper on top.



Kentucky Set play (11)

4

Kentucky Set Play vs. Man



If #5 does not get the ball or #1 does not have a shot on top, #1 will reverse the ball to #3 on the right wing while #4 is moving down for good post position on the right low block.

#5 may flash to the high post for the high / low post entry pass to #4.