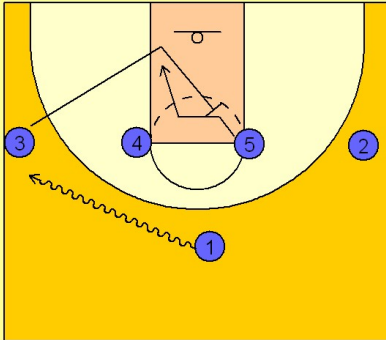


Kentucky Set play (2)

1

Kentucky Set Play

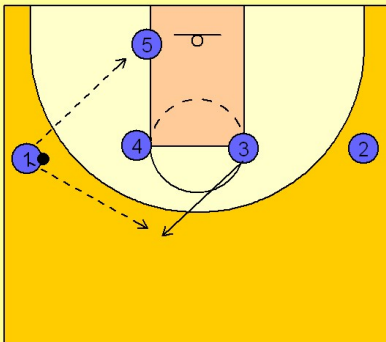


(#1) drives the ball over to either side. In this diagram, he takes it at (#3), clearing him out through the lane.

(#3) then v-cuts and comes back up the lane looking for a diagonal back screen on (#5's) defender. (#5) makes a good, hard cut to the basketball looking for the ball for the layup or good post up opportunity.

2

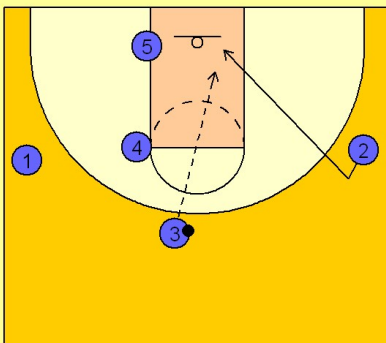
Kentucky Set Play



If (#5) does not receive the ball, (#1) will reverse the ball to (#3) who has just stepped out after the back screen.

3

Kentucky Set Play



(#3) will then look to set up a back door play with (#2) on the weak side by faking the reverse pass while (#2) fakes in the direction of the pass and then makes a good, hard cut to the basket for a back door pass.