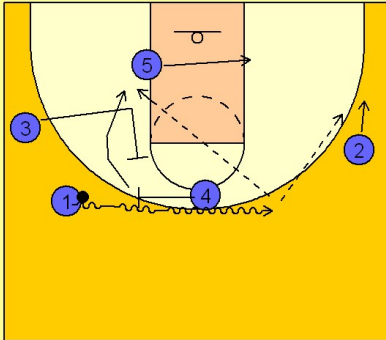


Kentucky Set play (4)

1

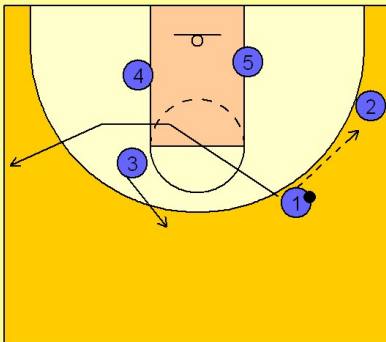
Kentucky Set Play



(#1) gets a ball screen from (#4) on top.
 (#5) follows the ball across to the block.
 (#3) moves in and then out for a back screen on (#4), looking for the pass from (#1) coming off the ball screen. (#1) can also look for (#2) spotting up off of the penetration from the ball screen.

2

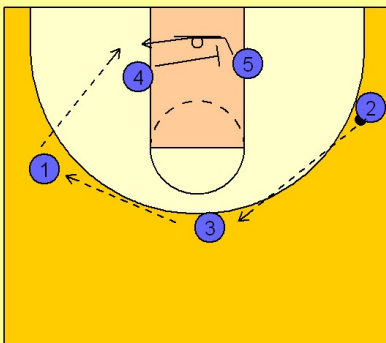
Kentucky Set Play



(#1) passes to (#2) and cuts through the lane and out to the other side.
 (#3) steps out to the perimeter after back screening for (#4).

3

Kentucky Set Play



(#2) reverses the ball to (#3) who passes to (#1) on the opposite wing.
 (#4) screens across for (#5) looking for a post up on the block.