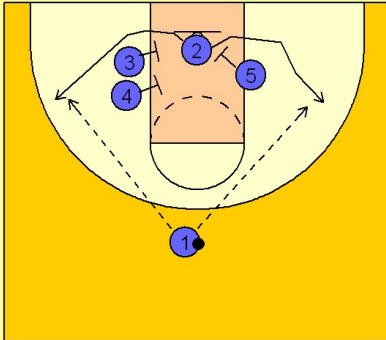


Kentucky Set play (7)

1

Kentucky Set Play vs. Man

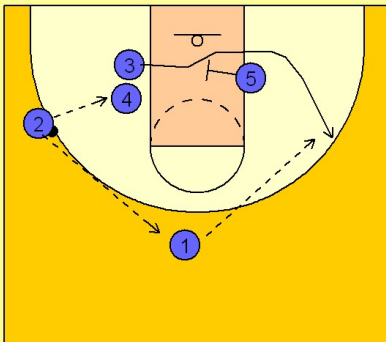


#2 moves down under the basket while #3 and #4 set up on the left side for a double screen and #5 sets up on the right side for the single screen.

#2 has the option to use the double screen from #3 and #4 or come out the single side screen off of #5.

2

Kentucky Set Play vs. Man



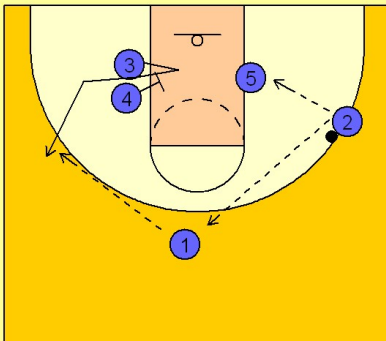
If #2 comes out off the double screen from #3 and #4, then #3 will go out the opposite side off of a single screen from #5.

#2 can look to dump it inside to #4 who has ducked in and posted up when #3 left.

#2 can also reverse the ball to #1 on top and look for #3 coming off #5's screen.

3

Kentucky Set Play vs. Man



If #2 decides to come out the single side screen from #5, then #3 will fake into the lane and use the down screen from #4 to pop out to the same side wing.

Like before, #2 can look to dump the ball down to #5 on the block or he can reverse the ball on top to #1 who will look for #3 coming off the down screen from #4.