

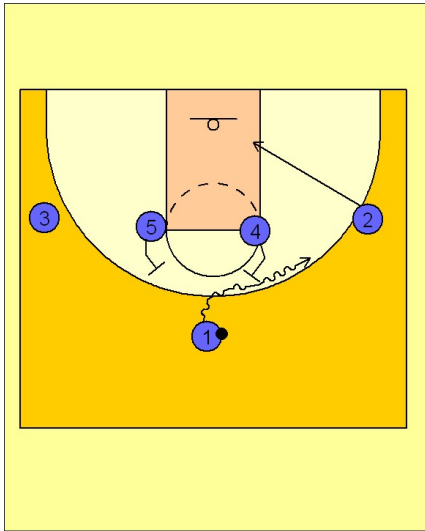
# Kentucky Set play (8)

1

Kentucky Set Play vs. Man

1 - 4 high across to start.

#1 can go in either direction. Here he takes the ball screen from #4 on the right side. #2 moves down to the block.

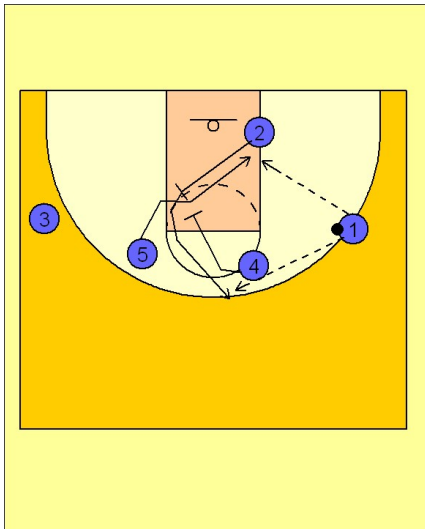


2

Kentucky Set Play vs. Man

#2 quickly moves up diagonally to set a back screen for #5 coming to the block for the post entry pass.

After screening, #2 will get a down screen from #4. #2 breaks to the top of the key area looking for an open shot.



3

Kentucky Set Play vs. Man

After screening, #4 can flash back to the high post elbow and look to receive the pass from #1. #4 will then look to make the high / low pass to #5, who is ducking into the paint.

