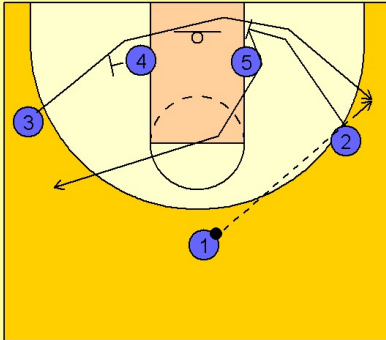


Kentucky Set play (9)

1

Kentucky Set Play vs. Man

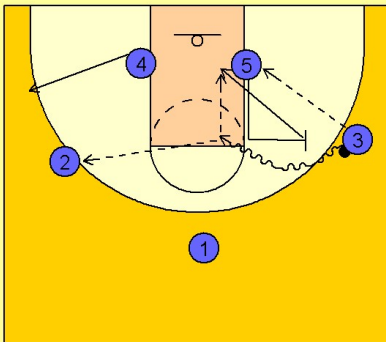


#2 moves down to form a double screen with #5 on the right block. #3 gets a back screen from #4 and then continues his cut across the lane and uses the double screen from #2 and #5 to get open for shot on the right wing.

As #3 comes off the double screen, #2 cuts up to the left top wing area. #1 enters the ball to #3 on the right wing.

2

Kentucky Set Play vs. Man



#3 will look to feed the post man #5 or execute a screen and roll with #5. #3 will look to score, hit #5 rolling, or drive and kick to the perimeter.