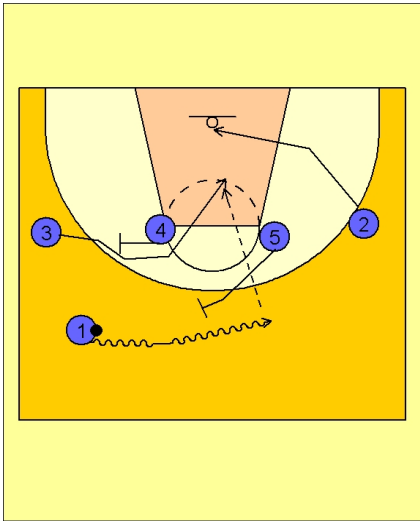




### Set play vs. man1



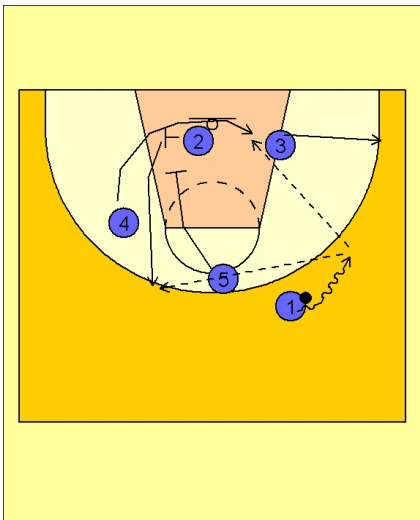
#### Lithuania Set Play vs. Man Defense

1 - 4 high set to begin.

#1 takes the ball across the top. As he is dribbling across, #5 steps out and sets a ball screen for #1.

#2 starts to move down underneath the basket while #4 sets a screen for #3 who curls in the lane.

#1 can look to hit #3 if he is open.



#### Lithuania Set Play vs. Man Defense

If #3 is not open he continues his cut and runs out to the right corner area.

#2 now sets a screen for #4 who has curled around under the basket. #1 looks inside to #4.

#5 then sets a down screen for #2. #1 looks to hit #2 on top for the open jumper if #4 was not open on the block.