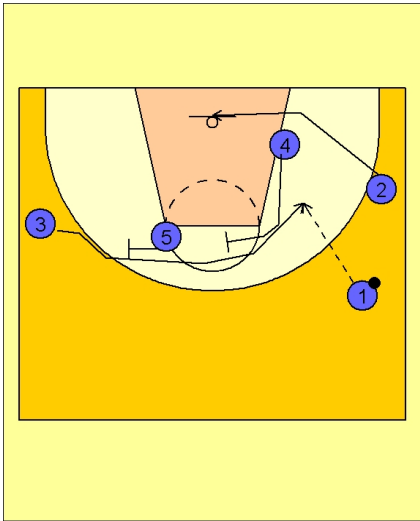




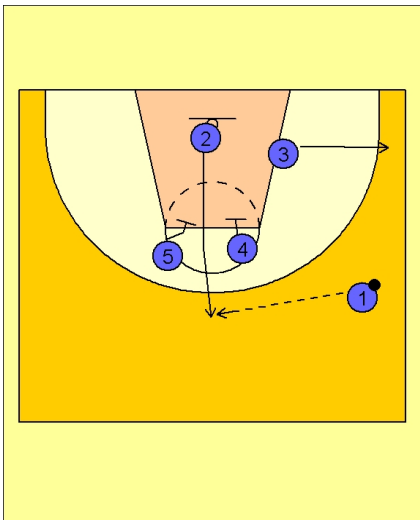
### Set play vs. man2



#### Lithuania Set Play vs. Man Defense

#1 takes the ball to the right side of the floor. #2 clears out underneath the basket. #5 and #4 set a double staggered screen for #3.

If #3 is open #1 will look to give him the ball.

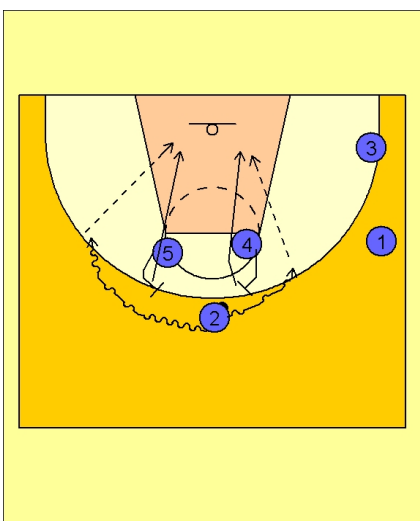


#### Lithuania Set Play vs. Man Defense

If #3 does not get the ball, he cuts out to the right corner area.

#5 and #4 set a double screen for #2. #2 cuts up the middle between #4 and #5. As #2 cuts through the double screen, #4 and #5 "close the door" on #2's defender.

#1 makes the pass to #2 on top.



#### Lithuania Set Play vs. Man Defense

If #2 does not have an open shot, #4 and #5 will quickly step out and set a ball screen on either side.