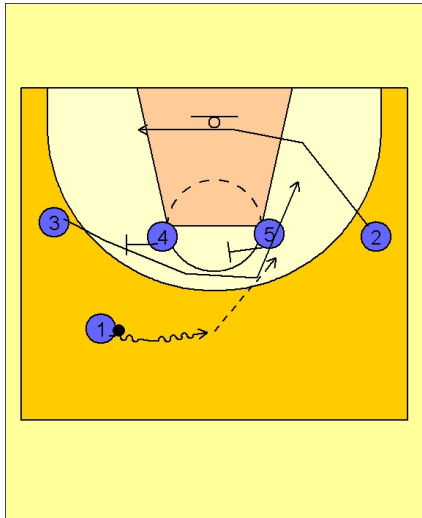




Set play vs. man7



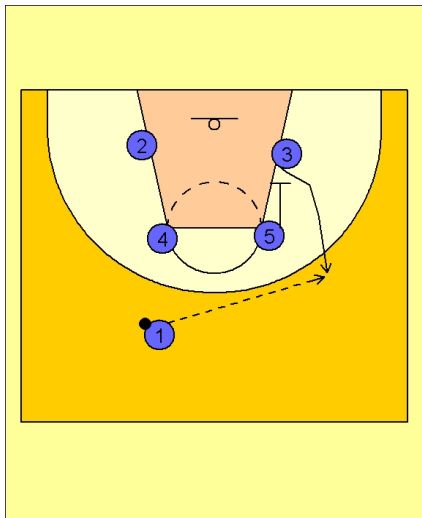
Lithuania Set Play vs. Man Defense

#1 drives the ball across the top.

#2 cuts underneath the basket to the opposite low block.

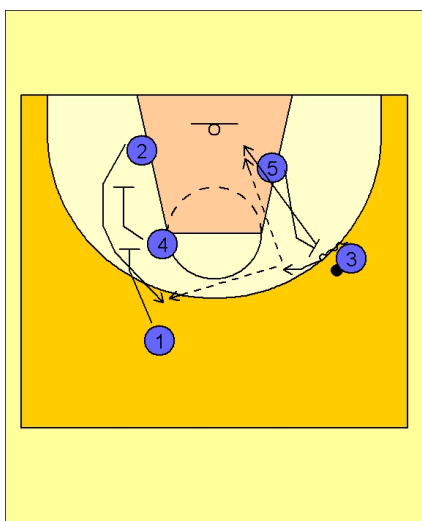
#3 uses a double staggered screen from #4 and #5.

#1 will look to hit #3 if he is open coming over the second screen from #5.



Lithuania Set Play vs. Man Defense

If #3 did not get the ball, #5 turns around and sets a down screen for #3. #1 passes to #3 popping out on top.



Lithuania Set Play vs. Man Defense

From here, #3 and #5 will execute a screen and roll on the right wing while #4 and #1 set a double staggered down screen for #2 on the right side.

#3 can look to score himself, hit #5 rolling to the basket or hit #2 coming off the double staggered down screen from #4 and #1.