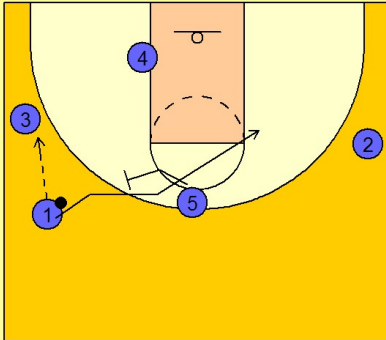


# Louisville

## Early offense (3)

1

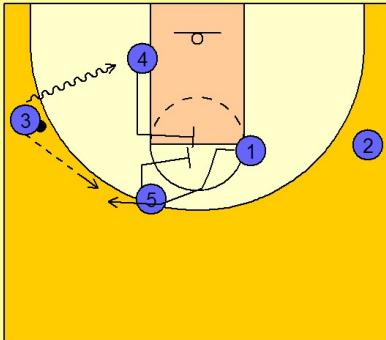
### Louisville Early Offense



#1 enters to #3 on the left wing. #5 sets a back screen for #1 who cuts over the top of the screen and to the right ft line elbow area.

2

### Louisville Early Offense



After #1 cuts over the top, #5 turns around and sets a double screen for #1. As #1 breaks to the top looking for the open three point shot, #3 also has the option to drive to the basket as the defense has been "occupied" by the double screen action at the ft line.