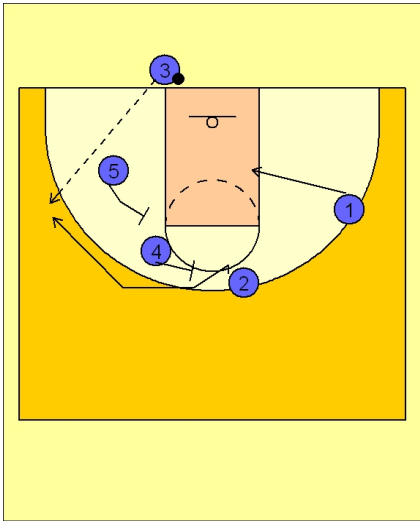




**Ob under vs. man (5)**

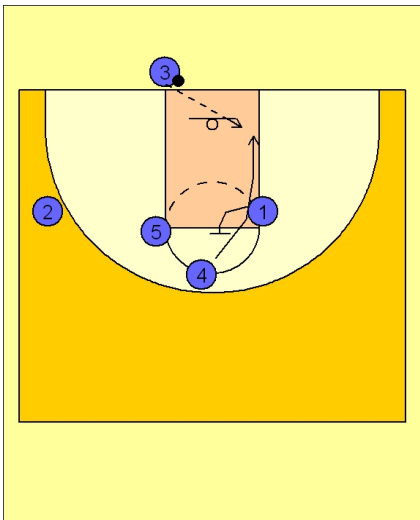


**Louisville OB Under vs. Man**

• #4 and #5 set a double staggered screen for #2 on top.

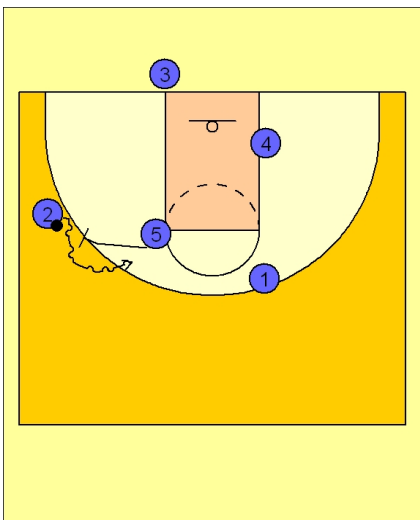
• #3 will look to pass to #2 on the left wing for the open shot.

• #1 on the opposite side of the floor begins to cut into the lane area.



**Louisville OB Under vs. Man**

• As soon as #2 comes off the screen from #4 on top, he will cut to the basket off the back screen from #1.



**Louisville OB Under vs. Man**

• If #2 receives the initial inbound pass from #3, #5 will step out and ball screen for #2 and Louisville will get into their motion offense.