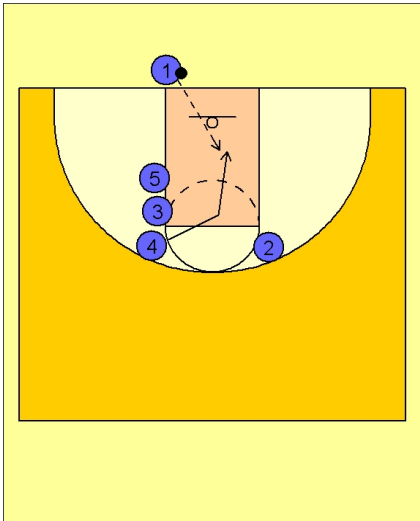


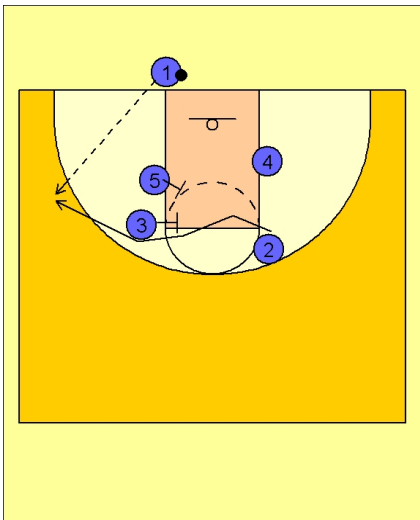


**Ob under vs. man (7)**



**Louisville Ob Under vs. Man Defense**

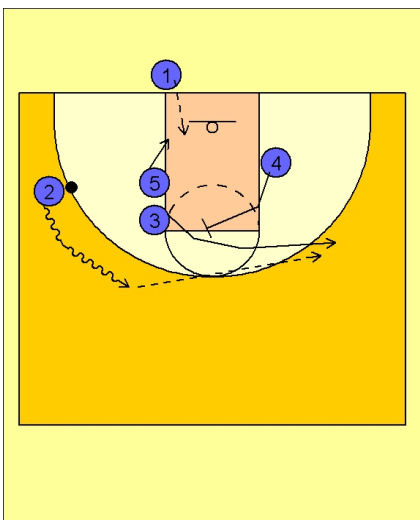
Play begins with #4 cutting into the lane looking for the quick inbounds pass from #1.



**Louisville Ob Under vs. Man Defense**

If #4 does not get the ball, #2 is cutting quickly after #4, using the double screen from #5 and #3.

#1 enters the ball to #2 on the left wing.



**Louisville Ob Under vs. Man Defense**

Once #2 has the ball, he dribbles up to the top. As that is happening, #4 sets a back screen for #3.

#3 cuts off the screen and spots up on the right wing, looking for the pass from #2.