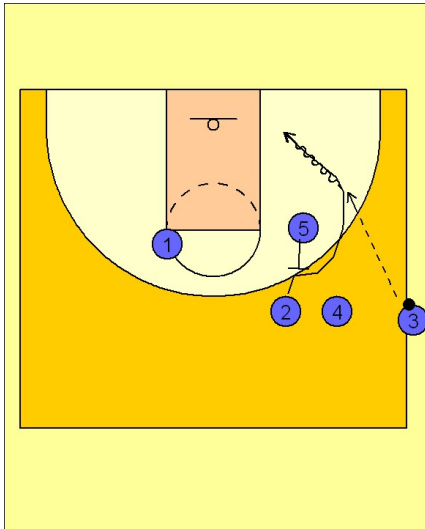


Louisville

Ob side out (1)

1

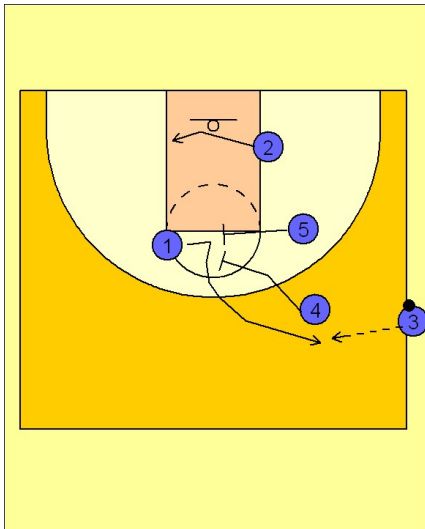
Louisville Side OB



(#2) starts by cutting to the basket off of a back screen from (#5). (#3) may hit (#2) for the first option and penetration to the basket for a score.

2

Louisville Side OB



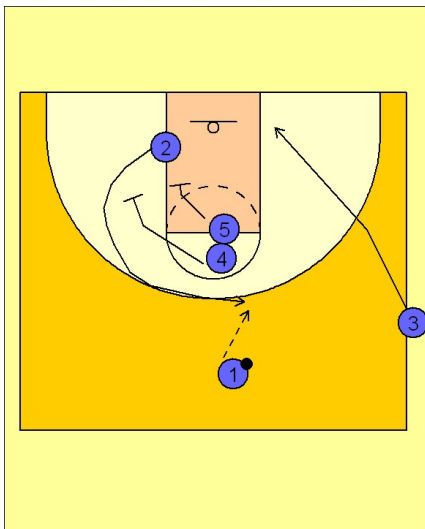
If (#2) does not get the ball he continues to clear out to the opposite block.

(#4) and (#5) double screen away for (#1).
(#3) enters the ball to (#1). If (#1) was not open, (#4) and (#5) would continue down screening for (#2).

To continue this diagram, we will assume the ball was entered to (#1).

3

Louisville Side OB



(#5) and (#4) set a double screen for (#2) coming to the top for a shot opportunity and pass from (#1).

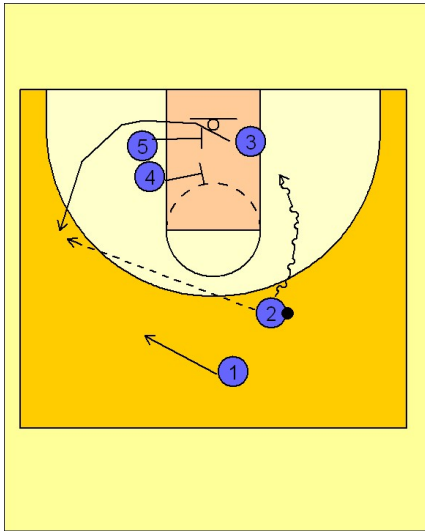
(#3) steps in and runs down to the block.

Louisville

Ob side out (1)

4

Louisville Side OB



(#2) then has the option to drive the ball as the side is being cleared out by (#3) coming off the double screen on the other side set by (#4) and (#5). If the drive is not there, he can look to hit (#3) coming off the double screen for a shot.