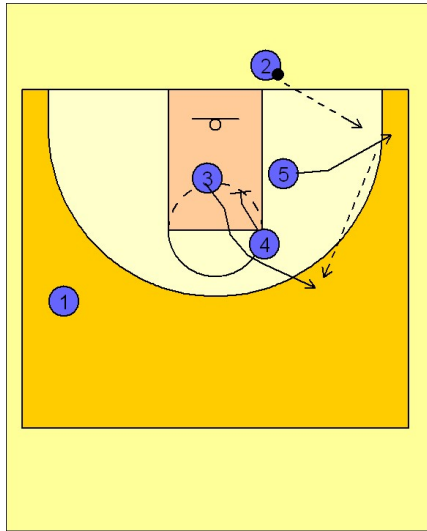


Louisville

Ob under vs. man (3)

1

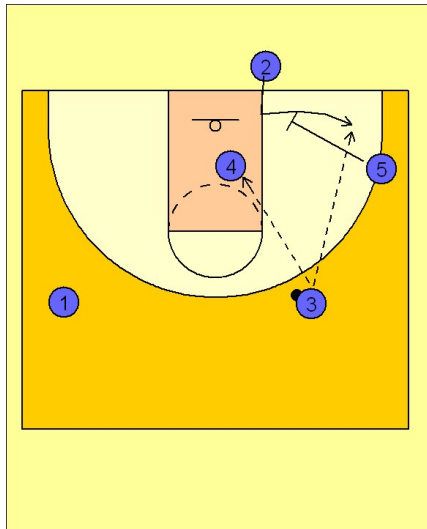


Louisville OB Under vs. Man

(#5) breaks to the corner while (#4) down screens for (#3) to come to the top of the key area.

(#2) inbounds to (#5).
(#5) passes to (#3) on top.

2



Louisville OB Under vs. Man

(#1) looks to post up (#4) who has pinned and sealed after down screening then to (#2) stepping inbounds and coming off the down screen from (#5) and the potential shot in the corner.