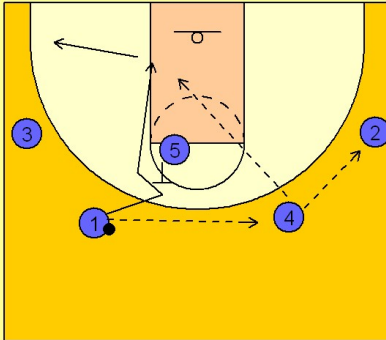


# Louisville

## Quick hitter (1)

1

### Louisville Quick Hitter

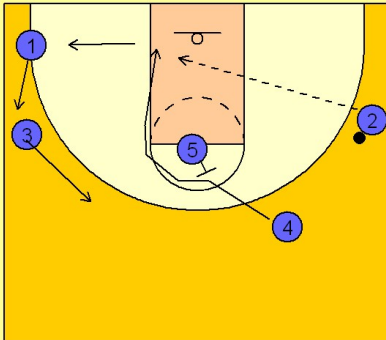


Louisville may start this quick hitter with a dribble hand off with (#3). In this diagram we will assume there was already a hand off between the two or that (#1) reversed the ball to (#4) without the dribble hand off.

(#4) then passes to (#2) on the wing. After (#1) passes to (#4) he cuts to the hoop off of a back screen from (#5) at the free throw line. If the defense is sleeping, (#4) can hit (#1) with a pass for a quick score. (#1) then clears out to the opposite corner.

2

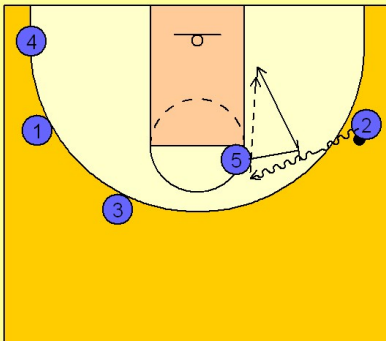
### Louisville Quick Hitter



After (#4) passes to (#2), he receives a back screen from (#5). Again, if the defense is sleeping (#2) can hit (#4) for a lay-up. (#4) then clears out to the opposite corner.

3

### Louisville Quick Hitter



(#5) comes over and sets a ball screen for (#2). This is a great option with the back side defense cleared out.