

Louisville

Quick hitter (3)

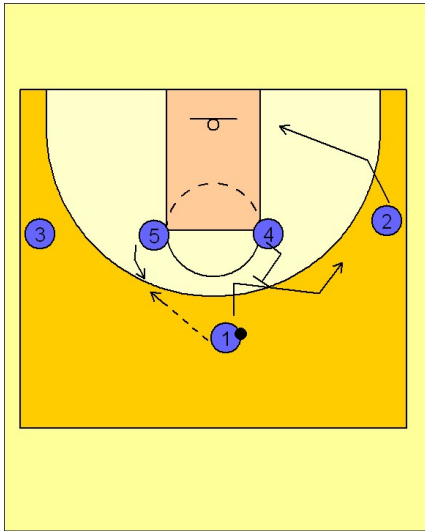
1

Louisville Quick Hitter

1 - 4 high alignment.

(#1) enters to (#5) and then gets a back screen from (#4). (#2) clears out on the pass to (#5).

(#5) can look quickly at (#1) for a shot if the back screen got him open for a shot.



2

Louisville Quick Hitter

If (#1) is not open on the back screen, (#2) clears across the lane while (#4) screens for (#1) on the wing. With the entire side of the floor cleared out, (#2) has the option to fake low and break high off the screen, which means (#4) would roll to the basket after screening. If (#2) fakes high and breaks low to the basket for a lay-up, (#4) would roll back to the ball on top.

