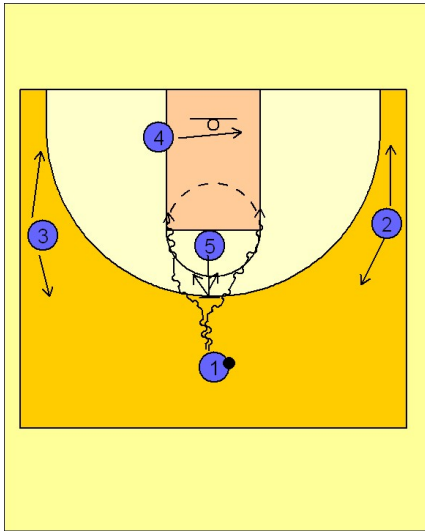


# Louisville

## Quick hitter (4)

1

### Louisville Quick Hitter



Louisville will use this alignment with the shot clock running down. (#5) steps out and sets a back screen for the dribbler (#1) who has the option to take the ball to the basket in either direction.

(#2) and (#3) must be aware as to what side (#1) chooses as the opposite perimeter player should get back for defensive purposes.

(#1) will look to get in the lane for a shot or a kick out to the wing if their defenders help on the drive. He can also dump it down to (#4) if his defender helps up. (#5) will roll to the basket to look to clean up and missed shots.