

Louisville

Quick hitter (6)

1

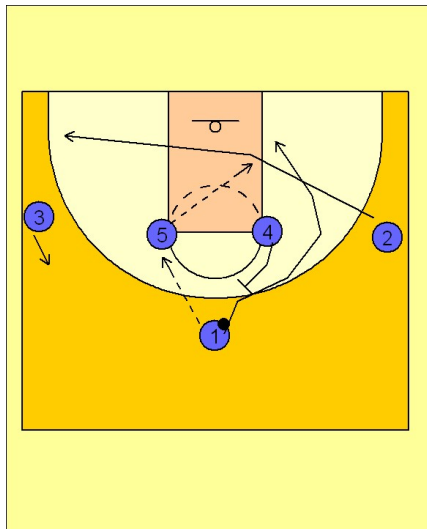
Louisville Quick Hitter

1 - 4 high alignment to start.

(#1) enters to (#5).

(#2) clears out to the ball side corner.

(#4) sets a back screen for (#1) breaking to the basket, looking for a quick pass from (#5).



2

Louisville Quick Hitter

If (#1) is not open cutting back door off of (#4's) screen, (#4) then turns around and sets a down screen for (#1) trying to free him for a jumper on the wing.

