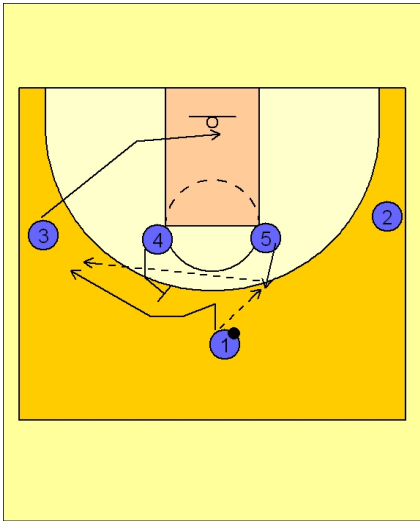




Set play (12)



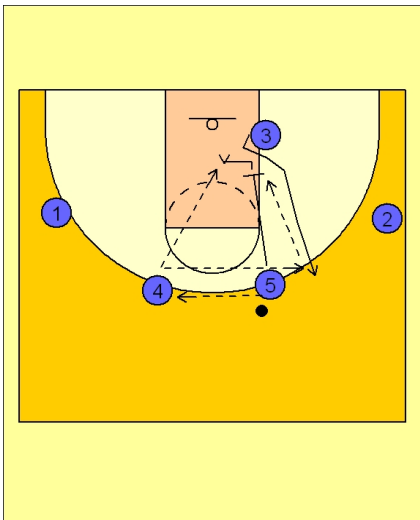
Louisville Set Play vs. Man Defense

1 - 4 high to begin.

#5 steps out to receive the entry pass from #1.

#1 then cuts to the back side of the floor off the back screen from #4 while #3 is clearing out the side for #1.

#5 looks to pass over the top to #1 if he is open.



Louisville Set Play vs. Man Defense

If #1 does not receive the pass, #5 will pass to #4 and will then set a down screen for #3 on the right low block.

#4 can look to hit #5 stepping into the lane after down screening or he can hit #3 for the jumper on top. #3 can also look to feed #5.